

Faith, Hope & Healing

St. Patrick Parish

411 Allegheny St, White Haven, PA | 570-443-9944 | www.stpatrickwhitehaven.org



Dear Members and Friends of St. Patrick Church,

I don't have to tell you that this year has been one like no other! The coronavirus pandemic has changed everything, including the way we worship and gather as a community. But during times of trial such as these, Jesus Christ stands firm, and our Church's mission to love God and our neighbor has become even more essential. Now more than ever, our parish is needed to help our communities move forward in faith, hope & healing, and we can't do this important work without your support.

Faith

Scripture tells us that *"God is our refuge and our strength, an ever-present help in distress."* (Ps 46:2). As we face the aftermath of the coronavirus pandemic, we stand strong in faith knowing that Christ is with us. And yet there are so many who do not know the Good News of Jesus Christ! There is no better time to share the Gospel message with the world. With your help, our parish can continue to bring the faith we love to others.

Hope

The prophet Isaiah counsels, *"They that hope in the Lord will renew their strength"* (40:31). Our community has been through hardship, but we are a people of hope! By assisting those in need through our many outreach programs, we extend that hope to others. But the parish can't do it alone. With your help, we can continue to bring the hope we need to others.

Healing

Jesus Christ is the prince of peace — the one who can calm the stormy seas. As his hands and feet, we are called to actively be Christ to one another as we embark upon a new ministry of healing within our communities. With your help, we can continue to bring the healing we crave to others.

With all of this in mind, I invite you to join our parish community by responding to our Faith, Hope & Healing Program. I ask that you please review this brochure and prayerfully consider how you and your family can help St. Patrick Church by financially supporting our ministries, furthering our mission, and reinforcing our future.

Thank you for your generosity, prayers, and commitment to St. Patrick Church!

In Christ,

A handwritten signature in cursive script that reads "Mary Anne Malone". The ink is dark and the signature is fluid and personal.

Mary Anne Malone
Parish Life Coordinator

Parish Staff



Mary Anne Malone
Parish Life
Coordinator

Rev. Peter O'Rourke
Sacramental Minister

*"God is our refuge
and our strength,
an ever-present help
in distress."*

Psalm 46:2



Loving Our Neighbor

Showing Christ's Love to Our Community in a Time of Need

OUTREACH

Our parish is reaching out to serve and minister to those in need. If you or someone you know needs assistance, please contact us.

CARING FOR THE HOMEBOUND

We continue to care for those who are unable to leave their homes at this time. If you know of a family or an individual that is homebound, please let the parish know.

PASTORAL CARE

If you or someone you know is in need of the care of a priest, we are here for you.



WAYS TO REACH US

Phone: 570-443-9944

Office Email: office@stpatrikswwhitehaven.org

Parish Life Coordinator Email: mamaloneplc@gmail.com

Website: www.stpatrikswwhitehaven.org

We Invite You To...

HAVE FAITH

Now more than ever, we should remember that God is our strength. We can turn to Him through prayer and in thanksgiving. As you pray, please remember in a special way:

- Our Neighbors & Community
- Church Leadership
- Our Local Government
- Our National Government
- Health Care Providers
- The Sick and Suffering
- Those Who Have Died



STAY HOPEFUL

We remember that our hope is found in the Lord! As hopeful people, we want to inspire the hope of Christ in others:

- Send a cheerful email
- Spend time with loved ones
- Write a letter to a friend
- Make a meal for a neighbor
- Spend quality time in prayer



AID HEALING

The work and ministry of our church continues, and the need is greater than ever! We rely on your support. Please continue to give generously through your offertory gifts to meet the physical and spiritual needs of our friends, neighbors, and community.

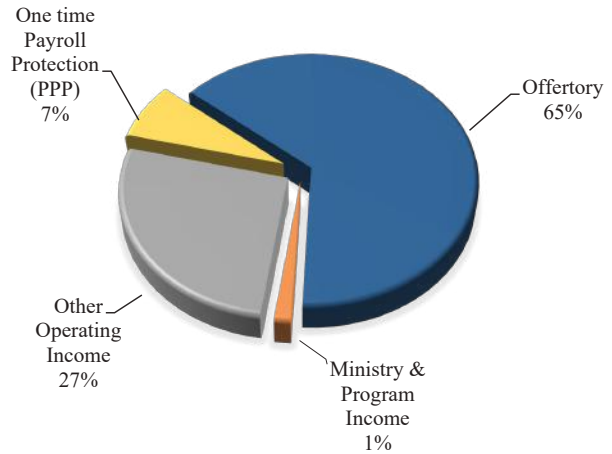


Financial Snapshot

January 1, 2020 - November 30, 2020

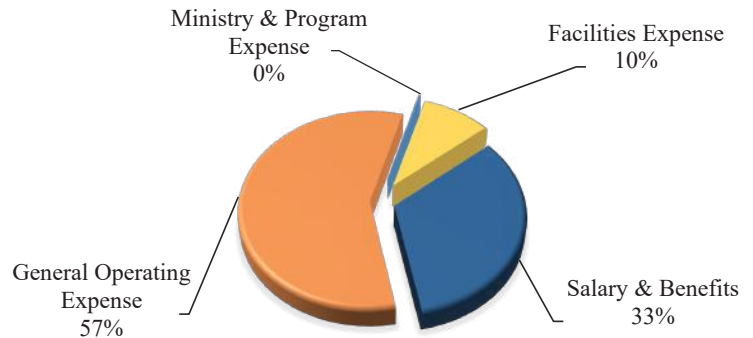
Operating Income

Offertory	\$142,512
Ministry & Program Income	3,209
Other Operating Income	58,479
One time Payroll Protection (PPP)	\$16,000
Total Operating Income	\$220,200



Operating Expenses

Salary & Benefits	\$85,179
General Operating Expense	147,201
Ministry & Program Expense	512
Facilities Expense	24,161
Total Operating Expense	\$257,053
Net Operating Surplus/(Deficit)	-\$36,853



Ways to Give

ELECTRONIC GIVING

Electronic giving is the **preferred, easy, safe and secure** way to give to our parish. To schedule a recurring electronic gift directly from your bank account or credit card, please visit our website at www.stpatrickswHITEHAVEN.org and follow the instructions. We appreciate all parishioners using this means to support our parish.

OFFERING ENVELOPES

Offering envelopes are still provided as a traditional way to support the parish. They can be shared at Mass during the offertory, dropped off at the church office or mailed in.

STOCK OPTIONS

Donor-advised funds are another easy way to make a contribution, with tax advantages to the parishioner. Contact the parish office for more information.